

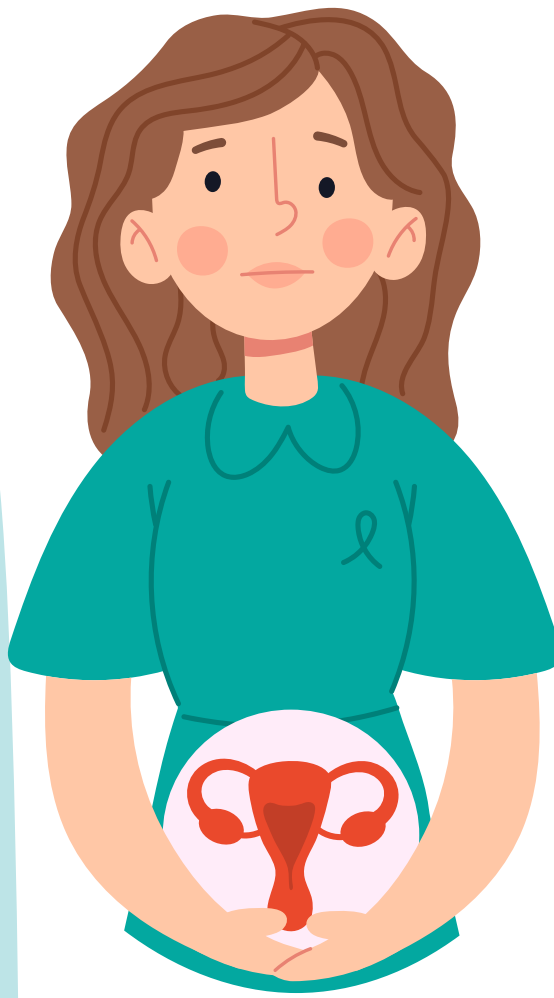
Cervical Cancer

4th most common cancer globally



Symptoms

- Bleeding between **abnormal** or heavier & longer periods
- **Watery vaginal** discharge
- **Post-menopausal** vaginal bleeding
- **Pelvic pain or pain** during intercourse.



Who is at Risk



- Women with **HIV**
- Early sexual activity or **multiple partners**
- **Long-term birth control** use
- **Having 3+ full-term** pregnancies
- **Weakened immune**

Preventive Measures

- Get HPV vaccine
- Limit sexual partners
- Regular check-ups & Pap Smear